

Thank you for choosing the Elitech electronic refrigerant scale. Please read this manual thoroughly before use, especially the "Warning" section. Keep the manual with the scale for further consultation.

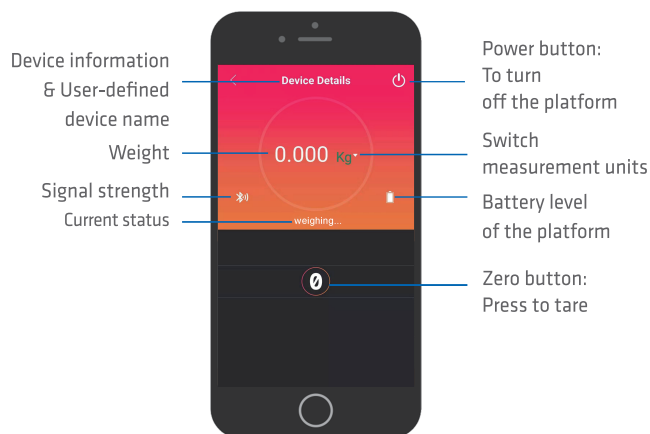
### Specifications

Maximum capacity	100kg (220lb)
Resolution	5g
Accuracy	±0.05% rdg+10g
Battery	Hand-held remote: 5 x AAA batteries Platform: 5 x AA batteries
Battery life	Hand-held remote: 50 hours Platform: 80 hours
Operating temperature	-10°C~40°C
Storage temperature	-15°C~50°C
Temperature fluctuation range	5°C/h
Relative humidity	50-85%RH
Wireless transmission distance	Hand-held remote: 5m App: 10m
Dimensions	271 x 271 x 74 mm
Mobile app	Android 4.4 or higher; iOS 7.0 or higher.



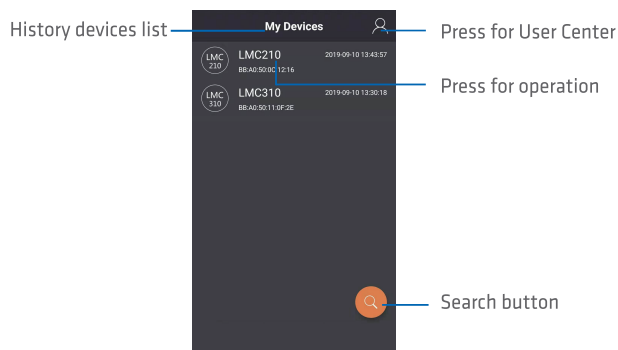
### Mobile App Operation

#### Main Interface

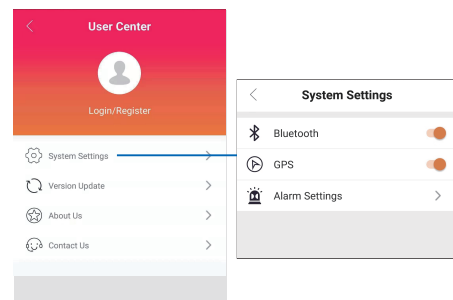


#### My Devices Interface

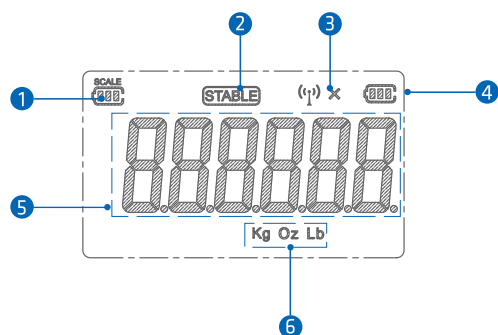
1. Display the history of devices that have been connected.
2. Connect new device: press button to search and list all available devices.
3. Click to enter User Center for user information and system settings.



#### User Center Interface:

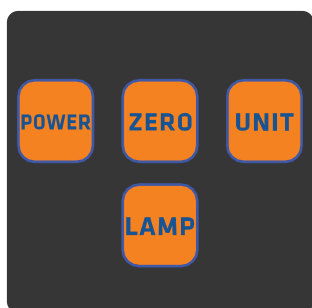


### Display



① Platform Battery Level	④ Remote Battery Level
② Weight Stabilizing Status	⑤ Weight
③ Wireless Connection Status	⑥ Current Unit

## Button Function



	When the scale is off, press this button to turn it on; When the scale is on, hold this button for 3 seconds to turn it off.
	Press to zero the current reading.
	Press to switch between kg, oz and lb.
	Press to turn on the blue backlight, auto off after 10 seconds. Hold the button for 3 seconds until the buzzer beeps once, the backlight will be always on; press this button again to turn it off.
	Press to turn on the platform.
	Press to activate the Bluetooth wireless connection.

## Quick Start

1. Install 5 AAA alkaline batteries into the remote.
2. Install 5 AA alkaline batteries into the platform.
3. Place the platform on hard and flat floor. Press button to turn it on.
4. Press button on the remote.
5. Wait until the wireless icon appears on the display, indicating the remote and the platform communicate successfully.
6. Press button to select your desired unit.
7. Press button to zero the reading.
8. Put your refrigerant cylinder or other objects on the platform, and read the weight when the icon is displayed stably.

## Function & Operation

### Weighing

1. Take out the refrigerant scale and place the platform on solid and level ground. Press button on the platform to turn it on.
2. Press button on the platform.
3. Take out the remote and press button to turn it on.
4. When the green status indicator on the platform flashes, the platform has communicated with the remote. The icon will appear on the display.
5. Press button to select your desired unit among kg, oz and lb.
6. Press button to zero the reading.
7. Place the refrigerant tank in the center of the platform and zero it again to display the weight of the refrigerant.
8. Read the instant change of refrigerant weight during charging or recovery.

### Overload Detection

If the weight of refrigerant tank exceeds the scale's maximum

capacity (100kg), the LCD will display *FULL*, the buzzer will beep and the red status indicator will flash indicate the alarm.

*Note: Do not load an object that weighs more than 100kg onto the platform to avoid damages to the platform and sensor.*

### Status Indication

Not Connected: The red LED light on the platform flashes slowly, the remote displays the icon and the weight as "-----".

Connecting: The red LED flashes quickly.

Connected: The green LED flashes slowly.

*Note: When the platform is being searched for more than 120 seconds, the platform and remote will turn off automatically.*

### Battery Indication

When the battery voltage is extremely low, the battery indicator icon will blink and the LCD may display unstably. Please replace the batteries in time so that you can use the scale normally.

## Other Functions

1. Self-test within 2 seconds after power-on.
2. Tare function applies to full weighing range.
3. Auto OFF: The scale will be automatically off if the weight remains unchanged for 10 minutes.

## Warning

- Please use the scale in specified environment to avoid error or even damage to the sensor.
- Please do not use chemical solvent or corrosive liquid to clean the platform.
- Please do not disassemble the platform to avoid big weighing error.
- Remove the batteries if the scale is not to be used for a long time in case the leakage corrodes it.
- The batteries included are not rechargeable, please do NOT charge them.

## What's Included

SRC-410 Refrigerant Scale x 1  
 Nylon Carrying Case x 1  
 AAA Alkaline Battery x 5  
 AA Alkaline Battery x 5  
 User Manual x 1



Android 4.4 or higher



iOS 7.0 or higher